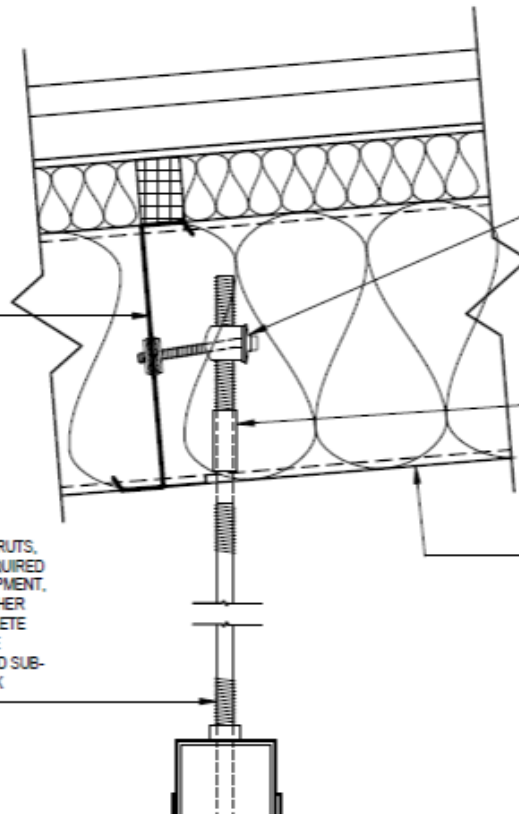


MECHANICAL
DUCT

ROOF PURLIN BY
METAL BLDG MANUF
- TYPICAL

ALL EQUIPMENT HANGERS, SUPPORTS, STRUTS,
ANGLES, FASTENERS, CLIPS, ETC... AS REQUIRED
TO SUPPORT / SUSPEND ALL MEPI/FP EQUIPMENT,
DUCTWORK, PIPING, CONDUIT AND ALL OTHER
MATERIALS AS REQUIRED FOR THE COMPLETE
INSTALLATION OF MEPI/FP SYSTEMS, TO BE
PROVIDED BY EACH SPECIFIC MEPI/FP FILED SUB-
BID TRADE ASSOCIATED WITH THEIR WORK
- TYPICAL



FASTENERS FOR ATTACHING MEPI / FP EQUIPMENT
HANGERS TO ROOF PURLIN FRAMING, SIMILAR TO
"SAMMY'S SIDEWINDERS", TO BE FURNISHED &
INSTALL BY SPECIFIC MECH, ELECT, PLUMB OR FIRE
PROT FILED SUB-BID TRADE, TYPICAL

EQUIPMENT HANGER COUPLING NOTE:
BOTTOM OF COUPLING TO BE INSTALLED 1/16"
BELOW BOTTOM OF ROOF PURLING FRAMING AS
REQUIRED TO INSTALL THREADED ROD HANGER
THROUGH ROOF VAPOR RETARDER

FABRIC VAPOR RETARDER INSTALLED FOLLOWING
INSTALLATION OF ALL MEPI/FP EQUIPMENT HANGER COUPLINGS
- GENERAL CONTRACTOR TO COORDINATE